



Akeneo PIM Enterprise Edition 1.7

Summary

The Teamwork Assistant.....2

- Build your own projects and automatically notify teammates
- Get to work without missing a beat

Introduction to the new web API.....4

- Develop better connectors faster and with less effort!
- Migrations made easy
- So, what will you be able to do with this first version?

Valuable improvements for our end-users.....6

- Highlight the completeness attributes in the Product Form
- Improved behavior of our multi-select filters
- Set another's user view as your own default view
- Increased the default view per page
- Apply roles' permissions to the dashboard
- Apply groups' permissions to the dashboard
- View asset thumbnails within proposals
- Display warnings during import, export, and bulk actions
- New "not empty" filters added to the product grid

Akeneo PIM 1.7 focuses on connectivity!

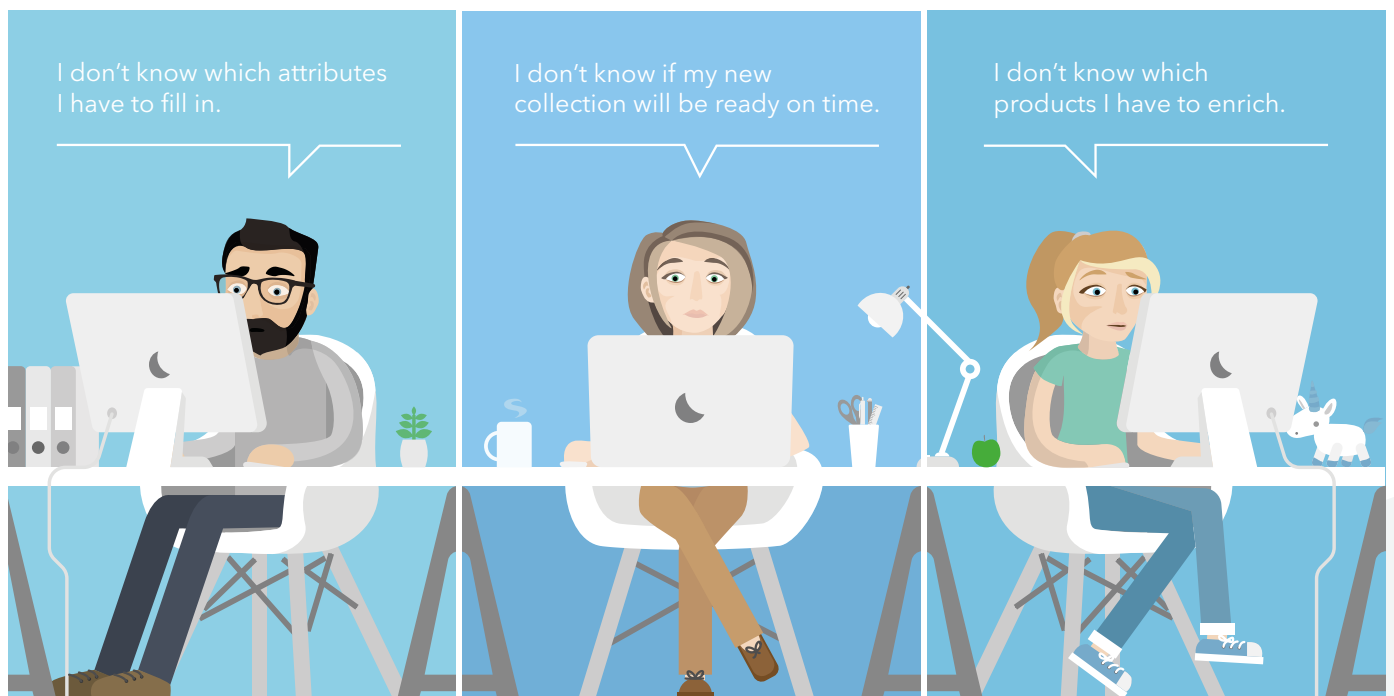
With this latest update we really wanted to improve connectivity within the PIM, between users, and to third party systems outside the PIM. Discover how the new features and improvements will simplify your day-to-day work with Akeneo.

The Teamwork Assistant EE only

When you have many users working with Akeneo PIM to enrich product content, it can be a challenge to know if you're late for the next collection or the next products range.

The **Teamwork Assistant** is a new Enterprise Edition feature providing project management integration that helps users understand what work still has to be completed and what products are ready to be exported.

With the Teamwork Assistant, a team of users will be able to easily view their project's enrichment progress. Users are automatically notified when new information needs to be filled in. These notifications help simplify workflows and communication between users.



Build your own projects and automatically notify teammates

Teamwork Assistant projects are a new way of organizing your work around specific activities. It helps you organize and plan your work, whether you are completing the project alone or with a team.

Ex: you are launching a summer product line and you must have it on your website by the end of May, therefore all of your product information must be completed and enriched by this date.

A project can be a new product collection or a range release for instance. It includes a specific set of products whose information needs to be completed by a specific date, for a specific locale, and a specific channel.

Any Akeneo PIM user can be a project contributor, but they will only be able to make changes based on their user permissions. Contributors are able to view all of the projects they are involved in. The project creators can edit or delete his projects.

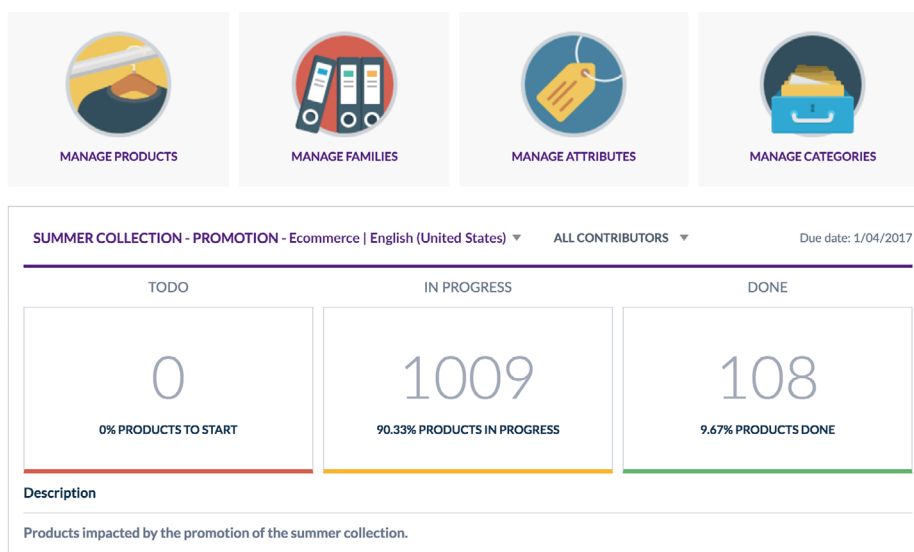
Notifications make it easy for project creators and contributors to stay on top of their tasks. Notifications are automatically delivered to contributors when tasks need to be completed. The entire team is notified of upcoming due dates or project progress.

Get to work without missing a beat

A new widget displays key information right on your dashboard. You can see:

- **TODO:** the number of products that have none of the required attributes completed
- **IN PROGRESS:** the number of products with at least one required attribute completed
- **DONE:** the number of products that require no further enrichment

These completion figures are calculated based on user permissions and relevant attribute groups. It is important to note that each user will have a personalized dashboard that includes the exact number of products they need to complete.



Projects follow the lifecycle of the product catalog and evolve accordingly. They reflect the status of the catalog and what needs to be done.

Ex: if new products are added to the catalog, the project will automatically reflect this change and KPIs will be updated with the additional products.

The Teamwork Assistant is THE feature to handle your projects and collaborate effectively. Users can easily see what tasks need to be completed and can focus on enriching products instead of wasting time trying to figure out what they need to do. The Teamwork Assistant is extremely easy to configure and use you will be surprised at how quickly your teams adopt this amazing new feature.

Teamwork assistant makes it so easy to collaborate!

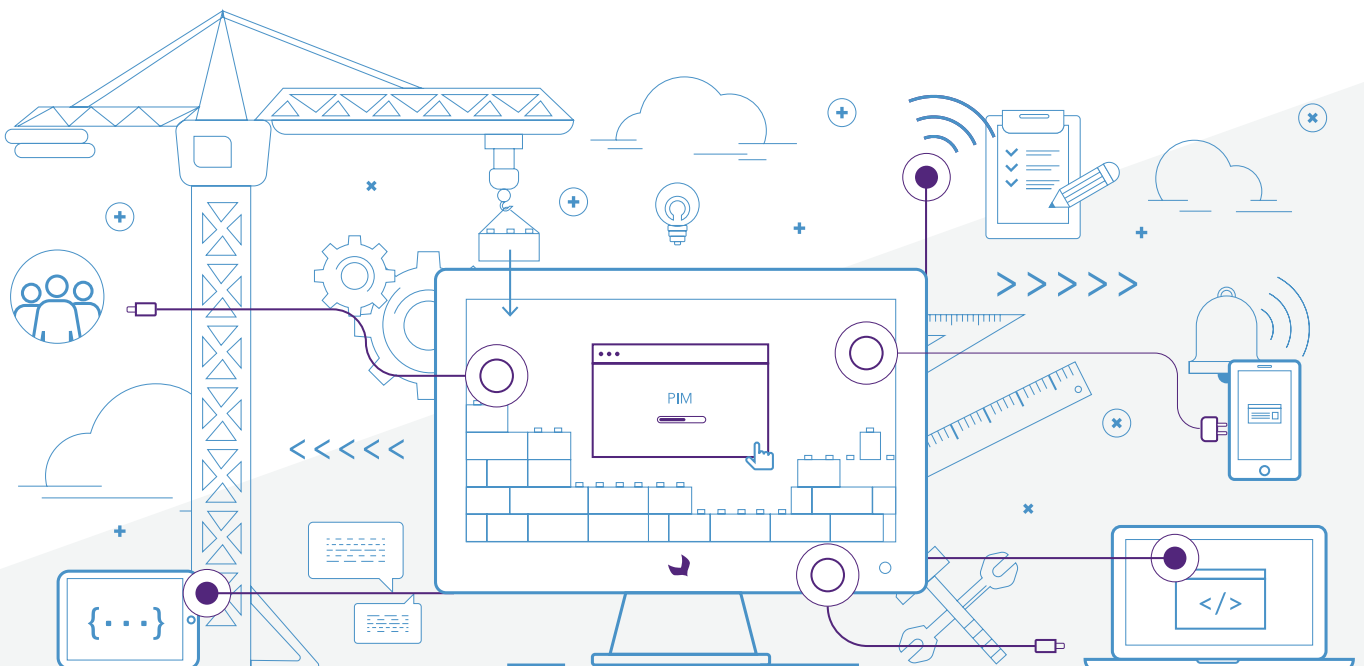


One of the best parts of the Teamwork Assistant?
You don't need to hire a project manager, Akeneo can handle it all for you!

Introduction to the new web API

We value the Akeneo community. We understand how precious you are, which is why we always do our best to take care of you.

We know you spend time writing new connectors to connect your favorite PIM to other third party applications. So we created a web API that allows you to create as many connectors as you want, without having to dig into Akeneo's code! We are providing you with a solid base - you just need to build over it...



Develop better connectors faster and with less effort!

We believe that developing connectors should be easy. Thanks to the web API, you can easily connect Akeneo PIM with your favorite external applications. Furthermore, the web API comes with **brand new documentation** to explain how it works and all the things you can do with it. Everything you need to know about our API is inside. Don't hesitate, take a look!

Migrations made easy

We know that migrations can be really painful, but by developing connectors based on our stable web API, you no longer have to suffer. By spending less time migrating to a new version of Akeneo, you can focus your efforts on developing something that is of real value to your users.

So, what will you be able to do with this first version?

With this first version of the Web API, you will be able to build import connectors that can:

- Insert new products
- Update products
- Create new category trees
- Update existing categories
- Create new families
- Update existing families
- Create new attributes
- Update existing attributes

You will also be able to create export connectors that extract data concerning:

- Products
- Categories
- Families
- Attributes
- Channels
- Locales

In other words

You will be able to:

- Get a filtered or unfiltered list of products
- Create a set of products
- Update a set of products
- Create, update, or delete a single product

Entities of the catalog structure such as categories, families, attributes, channels, and locales will also have their own endpoints:

- Get a list of categories
- Create and update a single category
- Get a list of families
- Create and update a single family
- Get a list of attributes
- Create and update a single attribute
- Get a list of channels
- Get a list of locales

To learn more about all these various actions, feel free to take a look at our **API reference guide** for a complete list of the available endpoints. Of course, this is just the beginning... more endpoints will be available in upcoming versions!

In terms of security, the web API uses **OAuth2** to authenticate users and Symfony ACLs to handle authorizations: you can easily manage who has access to your PIM data through the web API.

We have developed this web API as a platform to encourage you to create new connectors. Everything was made for you to be easy. What are you waiting for? Go try it!

Valuable improvements for our end-users

Highlight the completeness attributes in the Product Form

To help you focus on the attributes that still need to be filled in, we now highlight the empty required fields in the Product Form.

Note: in the enterprise edition, only required attributes you have edit rights to will be highlighted.

We use yellow bullets to draw attention to specific attribute labels and attribute groups that require completion. This way, your users can easily navigate to areas that require further attention and ignore everything else.

The screenshot shows a user interface for a product form. At the top, there are four tabs: 'Attributes' (selected), 'Categories', 'Associations', and 'Proposals'. Below the tabs, there are two dropdown menus: 'Ecommerce' and 'English'. The main content area is divided into three sections: 'Marketing', 'Technical', and 'Media'. The 'Marketing' section is highlighted with a yellow bullet. The 'Technical' section also has a yellow bullet. The 'Media' section does not have a bullet. The 'Marketing' section contains a 'SKU' field with the value '12829972'. The 'Technical' section contains a 'Name' field with the value 'Canon PowerShot D20'. The 'Media' section contains a 'Description' field, which is highlighted with a yellow bullet and a yellow circle next to the label. The 'Description' field is empty and has a language indicator 'en' next to it.

Ex: «Description» is a required attribute for the ecommerce channel in the English locale. Since it is empty, this field, as well as the attribute group, is highlighted for Julia so she knows that there are attributes in this section that still need to be filled in. Moreover, there are also required attributes that need to be completed in the «Technical» attribute group.

Improved behavior of our multi-select filters

We received a lot of feedback about how frustrating it was to use our multi-select filters, with the “all” choice always checked. Now, the “all” choice is automatically unchecked once you click on another choice in the multi-select.

Set another’s user view as your own default view

Previously, you could only use views you had personally created for your default view, but we got so much feedback about users sharing the views they had created. In Akeneo PIM 1.7 you can set another user’s view as your default view.

Increased the default view per page

We have increased the default view per page from 10 lines to 25 lines. Many users complained that a 10 lines display was just too small and they were tired of changing it every time.

Apply roles' permissions to the dashboard

Until now, no role permissions were applied on the dashboard. Even if a user did not have permissions to see families, the «Manage families» button was displayed on their dashboard. In the 1.7, the role permissions are now applied on the dashboard to display the buttons “Manage products”, “Manage families”, “Manages attributes” and “Manage categories”. The button «details» is displayed for the imports/exports only if the user has the permission to view the import/export reports details.

Apply groups' permissions to the dashboard EE only

Until the release of Akeneo PIM 1.7 group permissions on locales were not applied to the dashboard. Now group permissions are applied to the dashboard, so the completeness widget will only show the completeness on locales the user has view rights on.

View asset thumbnails within proposals EE only

In the 1.7, when a proposal is made on an asset collection, the asset thumbnail is displayed instead of its code.

Display warnings during import, export, and bulk actions

On the dashboard, import/export history pages, and process tracker page, you can now see if any of your import, export, or bulk actions generated any warnings, in a new “warnings” column. This column displays the number of warnings during the process.

New “not empty” filters added to the product grid

We received a lot of feedback from users who wanted to be able to find products having values filled in. For instance, Julia would like to look at all of the products with a completed description to check them and then quickly export them to her translators for translation. Based on this feedback, we have added «not empty» filters to the product grid.